

Mountain View Lodge

Dear Mountain View Lodge Guest,

Welcome to Aviano air Base Italy. Whether this is your new permanent change of station, temporary duty assignment or you are just visiting our beautiful base, we sincerely hope you find your new home away from home comfortable and enjoyable. Aviano and the surrounding area have much to offer during all four seasons. If you enjoy outdoorsy adventures, our Outdoor Recreation staff offer great Dolomite Mountain hiking trips or snow skiing packages. If traveling and experiencing different cultures is more your speed, check out Information Travel and Tickets office! They offer custom private tour packages to major European cities such as Milan, Venice, Florence, Innsbruck, London, Madrid, Barcelona, Paris, and more. For the visiting foodie, we offer great food and entertainment at the La Belle Vista Club, Mulligans Grill at the Alpine Golf Course or you can try the Italian Mensa. The 31st Force Support Squadron has it all!

We are proud and honored to have you as our guest! Rest assured the staff and management of the Mountain View Lodge will strive to provide you with the best lodging amenities, furnishings and service possible. We promise to ensure you have a clean, comfortable and pleasant room to guarantee a good night's rest. Please let us know immediately if there is anything that we can do to improve your stay by contacting the front desk at 632-4040 or 0 and they will direct your call to the appropriate person. At the end of your stay, please complete the emailed customer comment survey so that we can get some feedback on your stay! With constructive feedback we improve and grow so that your next visit will be perfect.

Please enjoy your stay!

BARBARA WILLS-GAMBLETON, CHA, NF-IV
Lodging Manager, Mountain View Lodge



Mountain View Lodge

Emergency Procedures: Upon discovery of a fire, sound fire evacuation alarm located next to the main exits of all buildings. Emergency phone numbers are affixed to each phone. The Emergency meeting place is the La Bella Vista Club parking lot.

Defense Switch Network: From Room Phone Dial 97-632-XXXX DSN Prefix 632-XXXX
Base Operator (from room) 97-0 Base Operator 632-1110

Emergency Numbers: From Room Phone Dial 97-632-XXXX
Fire, Medical, or Police: 911 from regular DSN or from a commercial line or cell phone: 0434-30-8911 The Aviano Air Base 911 System will assist with dispatching emergency response teams into the local area.

Base Operator	632-1110	Fraud, Waste, & Abuse	632-5639
Chaplain	632-5211	Law Enforcement Desk	632-7200/7872
Chaplain After Hours	632-3100	Medical Appointment Line	632-5000
Command Post	632-3100	Poison Control (Germany)	0049-6371-86-7070
Dental Appointment Line	632-5060	Red Cross After Hours	632-5576
E.O.D. (Explosive Ordinance Disposal)	632-7264/7345	Tricare Nurse Advice Line	800-877-660
		Tricare Service Center	632-5133

For current Aviano AB information and events please view the app or go to www.aviano.af.mil

Call the Aviano Straight Talk Line

For emergency and severe weather alerts, rumor control, base and road closures; call DSN 632-3172 or Commercial 0434-30-3172

Room Payments: Air Force Instruction 34-135 requires you to provide a valid credit card (Visa/Master Card) upon check in whether you're paying by credit card, cash or check. For extended TDY/Inbound PCS guests (those staying longer than 15 days) all payments must be made NLT every 15 days. Housing requires personnel filing for Temporary Lodging Allowance (TLA) to make payments every IO days to facilitate your TLA reimbursement.

Lodging Room Rates & Fees

Visiting Quarters	\$94.00	Pet Fee per Night (Bldg. 1481 Only)	\$10.00
Temporary Lodging Facility	\$101.00	Cleaning Fee	\$150.00
Distinguished Visitor Suite	\$101.00	Late Checkout Fee	Room rate

Check-out Time

Check out time is 1100 hours. Please secure your room and return key to the front desk (phone number 632-4040). You may request a late check out by calling the front desk, however, you may be charged for an additional day.



Mountain View Lodge

WiFi Hot Spots & Cyber Stations

Please contact the specific facility for days and hours of operation, please visit the Aviano App or go to www.31fss.com.

MVL WiFi:

Domain Name: Aviano_WiFi
WiFi Passcode: 31Fsslodge

**Please note: Accessing illegal websites (such as torrent sites, etc.) will cause a disruption of internet service on the device used to access the site. The disruption can be from 30-60 minutes.

WiFi Hot Spots

Area 1:

Aviano Lanes Bowling Center
Community Center
Deja Brew

Area F: (Flightline)

Airman & Family Readiness Center (AFRC)
La Bella Visa Club
Deja Brew II

Facility information can be found on the Aviano App.

Cyber Stations: Computer labs available for use by the general public

Area 1:

Community Center
Library

Area F: (Flightline)

Airman & Family Readiness Center (AFRC)



Mountain View Lodge

Welcome Valued Guest! We have provided you with a few complimentary items to get you through your first night's stay. Feel free to ask any Lodging Team member if you need any of these items replenished. If you forgot to pack any other toiletry item, please come see us at the front desk. We should have what you need available for purchase.

The Air Force Inns Promise

"Our goal is to provide you a clean, comfortable room to guarantee a good night's rest and pleasant stay. If any part of your stay with us is not satisfactory, please provide the lodging manager or front desk staff an opportunity to 'make it right'."

Occupant Responsibilities

Please note the following will help to ensure a more comfortable visit for yourself and others. Occupants are responsible for their conduct and the conduct of their guest, and/or family members, while in government lodging. Their actions must not infringe on the rights of others. Occupants will also:

- ☞ Conserve utilities, comply with fire, health and safety regulations
- ☞ Reimburse lodging for damage beyond fair wear & tear and for missing government property caused by abuse or negligence on their part or by their guest. AFMAN 23-220 Reports of Survey for Air Force Property or AFI 31-202 Protecting Non-appropriated Funds Assets, govern the assessment of loss or damage to a lodging unit by a guest. The general manager processes a report of survey on loss or damage to NAF assets in accordance with AFI 34-202.
- ☞ Pets are only authorized in building 1481.
- ☞ Quiet hours are from 2200-0700.
- ☞ Any items left behind in the room after check-out are subject to our lost and found disposition/holding procedures per local Operating Instruction 34-135.27. Hygienic, toiletry and consumable items left behind (including infant and pet food) will be immediately discarded by housekeeping.

Mountain View Lodge's Pet Policy

Pets are prohibited in our facilities with the exception of the building 1481, which is our only Pet Friendly Facility. Please call our front desk at 632-4040, or the Aviano AB Veterinary Clinic, Area F (Flightline) Building 1410, at 632-8485 for information on local kennels. A \$150.00 room-cleaning fee will be assessed if pets are found in your quarters, unless you are in building 1481.

Local Kennels in the Area

Kennel	Address	Location	Phone#
L'Olimpo	Via de Zan, 59	Aviano	349-761-3672
Home Boarding	Via Riccardo Pitteri	Aviano	393-331-8628
Rifugio del Cane	Via Villutta 24	Villotta	0434-630-420



Mountain View Lodge

Housekeeping Services

Rooms and bathrooms are cleaned daily and toilet articles are replaced as requested. Towels are changed daily when left on the floor. If you feel your supply of towels is inadequate, please notify the housekeeping staff.

Linens will be changed upon check out or once per week for extended guests.

Please contact the Front Desk if you have any maintenance issues or would like to request housekeeping service. Closets or wardrobes are provided for your clothes. Housekeepers are instructed not to handle personal items. To ensure your room is cleaned properly, please keep personal items off the floor and bed. Just a friendly reminder "Lodging is not/responsible for individual's personal property."

In a stay over room, housekeepers are required to:

- ☞ Empty trashcans in rooms
- ☞ Make the beds
- ☞ If towels are on the floor they should be removed and replaced with clean towels.
- ☞ Limited amenities should be restocked.
- ☞ In the DV suites the sundry items should be restocked daily. Floors and carpet should be cleaned.

For extended stay over (more than 7 days), every week housekeepers are required to:

- ☞ Change bed linens
- ☞ Toilets should be cleaned inside and out
- ☞ Clean bathtub inside and out
- ☞ Vanities, sinks, and mirrors should all be cleaned
- ☞ Towels should be exchanged if they have not been changed already.

Lodging Management reserves the right to charge a cleaning fee of \$150.00 for rooms that are excessively dirty at checkout.

Save the towels

All the water and detergents used to wash hotel towels and linens each day all over the world puts a heavy burden on our environment. If you would like to reuse your towels just hang them on the towel racks. If you want your towels replaced, please leave them on the bathroom floor or in the tub.

Laundry and Dry Cleaning Services

There is a laundry room located on the ground floor of the main building. You may use these washers and dryers free or charge. A public laundry is located by the Shoppette on the Flight Line and in Area I near the Community Center. Laundry soap is available for purchase at the Front Desk, the Commissary and the BX. AAFES also offers dry cleaning services located in the Main BX on the Flight Line.



Mountain View Lodge

Forget a travel item?

No problem! We have provided you with a few complimentary items to get you through your first night's stay. If you forgot to pack any other standard toiletry items (toothbrush, toothpaste, shaving cream, etc.) please come see us at the front desk. We should have what you need available for purchase.



Mountain View Lodge

Television Guide Aviano

Network	Channel
General Viewing	
Commanders Channel	02
Marketing Channel	03
AFN Prime ATL HD	04
AFN News HD	05
AFN Sports HD	06
AFN Prime PAC HD	07
AFN Spectrum HD	08
AFN Sports 2 HD	09
AFN Pulse HD	10
AFN Movie HD	11
Cooking	12
Hallmark	13
Hallmark Movies & Mystery	14
A&E	15
Magnolia	16
Outdoor	17
History	18
Lifetime	19
Lifetime Movie Network	20
Military History	21
Discovery	22
TLC	23
Animal Planet	24
Investigation Discovery	25
HGTV	26
Food Network	27
Travel	28

*All programming not available in all areas/Channel line-up subject to change

Mountain View Lodge

Guest Services Locations

Ice Machines: Located in the laundry room on the ground floor of the Main building

Fitness Room: The fitness room is located on the first floor of the main building. The room is equipped with a treadmill, a recumbent bike, and an elliptical machine. It is available for your convenience 24 hours a day.

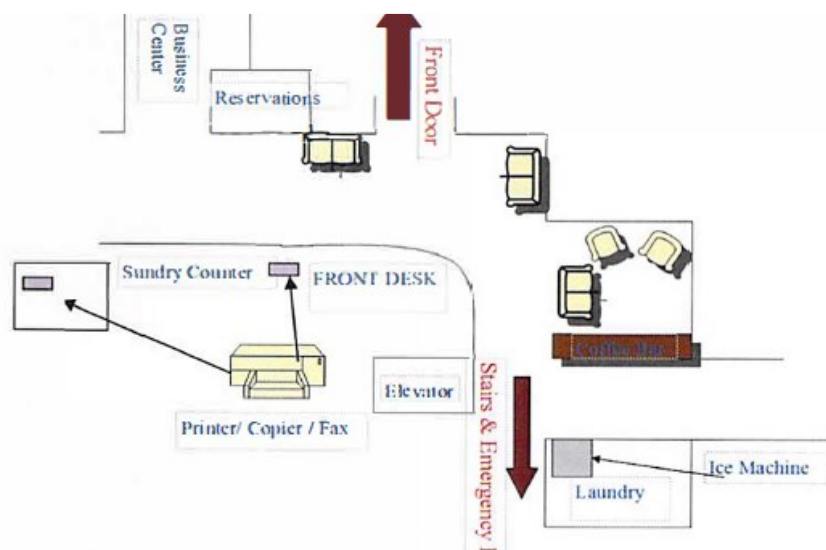
Sundries: The reception desk stocks an assortment of convenience items for sale such as liquors, beer, soda, candies, microwaveable meals, laundry aids, and a variety of comfort items. Please contact our front desk for further information.

Conference Room: There is a conference room available for guest located on the second floor. Please contact the front desk to make a reservation.

Business Center: There are three computers with printer capability available on the ground floor. Wireless internet capabilities are available in all guest rooms and the lobby. Request current password from the front desk for access to the wireless network.

Copier & Fax Machine: There is a fax machine and copier located at the front desk. They can be used for official business purposes only and are free of charge.

Amenities: Complementary amenities (coffee, tea, mouthwash, lotion and shampoo) are provided upon check-in for the first night only.



Mountain View Lodge



Thermostat Operation: TLFs will have 5 buttons and VQs will have 3 buttons:

There are five operator buttons:

Button 1 (top to bottom right hand side): Temperature up button. Adjusting the

temperature will only allow for a five degree difference. The temperature control will

allow you to raise the temperature to 35 degrees Celsius, but the

actual temperature will

only increase from 20 degrees to 25 degrees at best.

Button 2 (top to bottom right hand side): Temperature down button. Adjusting the

temperature will only allow for a five degree difference. The temperature control will

allow you to decrease the temperature to 5 degrees Celsius, but the actual temperature

will only decrease from 20 degrees to 15 degrees at best.

Button 3 (top to bottom right hand side): Mode button. The "mode" button marked by an "M." Pushing this button will allow you to change from heat (shown as a sun), to cool (shown as a snowflake), and circulation-no heat and no cool (shown as a blower to circulate air only).

Button 4 (top to bottom right hand side): On or off button and fan speed settings. This will allow you to turn the thermostat on or off. This button will allow you to cycle the fan speed setting from automatic to manual and change the fan speed from low, medium, and high.

Button 5 (top to bottom right hand side): System operation button. This button allows you to change the operation of the system to "ECO" meaning economy mode or full run.

If in economy mode the system will only be working minimally.

Mountain View Lodge



Visitor Quarter's Building 1484 Thermostat Operation:

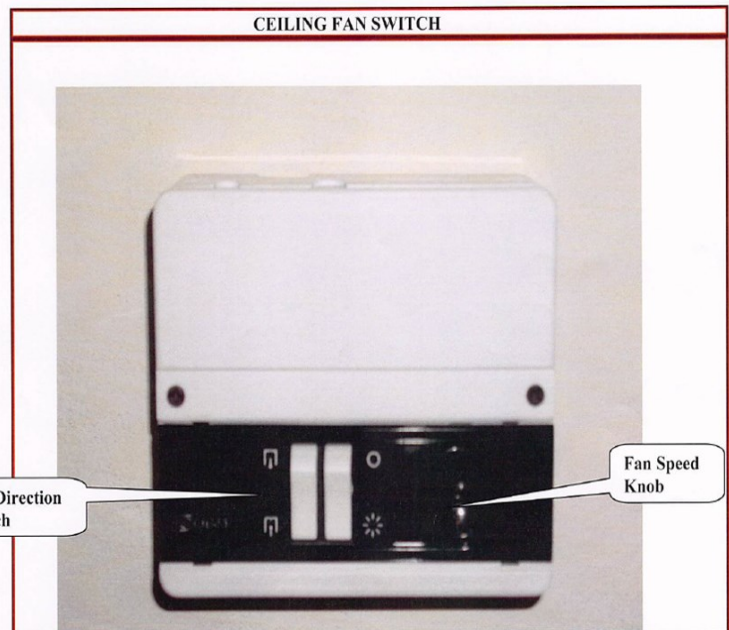
Button 1 (Left): Controls automatic to manual and fan speeds.

Button 2 (Center): Controls on and off

Button 3 (Right): Controls season setting—winter or summer

Rotate control for temperature setting. Rotating the dial down will allow the temperature to be increased to a maximum of 5 degrees. Rotating the dial up will allow the temperature to be decreased a maximum of 5 degrees. This will be indicated by a plus or minus sign next to the number. The preset temperature is 20 degrees Celsius.

Please bear in mind that CE controls the overall temperatures of the rooms and determines the no heat/no AC seasons and temperatures. If you suspect there is a fault with your unit and do not feel air flow, please contact the Front Desk by dialing 0 from your room phone to submit a work order.



Mountain View Lodge

The room key should be chip side and orange facing the wall. It is inserted as an energy saver. Removing it will cause the power and energy to turn off. These should not be used as your room keys and should be left inserted.



Mountain View Lodge

Telephone Instruction

Phone Calls from Room to Room

Front Desk	0
Base Operator	970
Local Calls (see rates next page)	99 + Number (charges apply)
To call DSN numbers (on base or other European bases)	97 + seven digit DSN
To call DSN numbers in the US	97 94 312 + seven digit DSN
To call a room within the Visiting Quarters	4 + three digit room number
TLF Building 1480	5 + three digit room number
TLF Building 1481	1 + three digit room number
TLF Building 1482	2 + three digit room number
TLF Building 1483	3 + three digit room number
To call into Aviano Air Base from off base	0434 30 + four digit DSN extension

*Persons attempting to contact a guest must call lodging at 632-4040; when prompted, enter the four digit extension as shown above for calling within the hotel network.

Long Distance/International Calls

To call Aviano AB from the US	011-39-0434-30 + DSN ext
To call Aviano AB from within Europe	0039-0434-30 + DSN ext
To call Aviano AB from within Italy	0434-30 + DSN ext
To call US from room phone	99+001+area code+number (charges apply)
To call Germany from room phone	99+0049+city code+number (charges apply)
To call an 800 number in the US	970 and ask Operator to connect you
ATT&T	99+800+172444 (charges apply)
MCI	99+800+905825 (charges apply)
Sprint	99+800+172405 (charges apply)

*there is no connection fee to Italy toll free numbers starting with 800. You must use the Italy toll free access number to access other carriers. If you dial the US 1-800 calling card access number, this is not a toll free call and you will be charge \$.50 per minute.

*Please see next page for room phone charges pricing.



Mountain View Lodge

TELEPHONE RATES

DSN Calls – Italy FREE

Local Calls – Italy 30 ¢ / min

Local call numbers begin with digit / city code 0434XX

Calls to Cell Phones – Italy 50 ¢ / min

Cell phone network numbers begin with digit 3

Long Distance – Italy 50 ¢ / min

Italy Toll-Free Number FREE

Italy toll-free numbers begin with digits 800

Calls to the Following Countries 50 ¢ / min

Austria, Belgium, Denmark, Finland, France, Germany, Greece, Ireland, Luxemburg, Netherlands, Norway, Portugal, Spain, Switzerland, United Kingdom.

Calls to UNITED STATES & CANADA 50 ¢ / min

Calls to All Other Countries 85 ¢ / min



Mountain View Lodge

Voice Mail & Wake Up Call Instructions

To Retrieve Messages From Your Telephone Inbox:

To retrieve and/or delete messages from your room phone, press the message button and follow the voice prompts.

**The default password is the last digit of your building number. Followed by your three digit room number . (Example: Room 031 in 1482 , your password would be 2031)

**Building 1480 will dial 5 followed by your three digit room number. (Example: Room 031 in 140 will dial 5031)

To Request a wake up call:

Please contact the Front Desk by dialing 0.

Phone Charges Per Minute

DIAL 99 first to dial a number outside Mountain View Lodge or base DSN network. All non-MVL or non-DSN calls are subject to the following rates:

Note: All phone charges are subject to change and are based upon the Telcom Italia rate in Euro.

Type of call	Rate per min
Local Call	\$.30
Local Cellphone	\$.70
Long Distance (within Italy)	\$.50
US & Canada	\$.50

The local cell phone rate is only to Italian cell phones. Other countries may charge various cell phone vary.



Mountain View Lodge

Installation/Community & FSS activities

All numbers are listed DSN, please refer to the Telephone and Internet section for commercial phone number

Global Credit Union

Location: Flightline, Bldg. 1472
Phone: 632-7697
Hours: Monday-Friday: 0900-1600

Golf Course:

Location: Flightline, Bldg. 1391
Phone: 632-7386
Hours: Monday-Sunday: 0700-Dusk

Home Fuels

Location: Flightline, Bldg. 1409
Phone: DSN 632-5083
Hours: Monday-Friday: 0830-1630

Housing

Location: Flightline, Bldg. 1409
Phone: 632-2272
Hours: Monday-Friday: 0800-1630

Information, Tickets & Travel

Location: Flightline, Bldg 1411
Phone: 632-3107
Monday-Friday: 1000-1800
Saturday: 1000-1400

Library:

Location: Area 1, Bldg. 149
Phone: 632-5382
Hours: Monday-Saturday: 1000-1800
Goal Days: 1000-1800

Military Clothing Sales:

Location: Area 1, Bldg. 179
Phone: 632-5404
Hours: Monday-Friday: 0800-1630

Pass & Registration

Location: Flightline, Bldg. 1391
Phone: 632-4858
Hours: Monday- Friday: 0730-1630

Passport Office

Location: Flightline, Bldg. 1413, Room 142
Phone: 632-5404
Walk In Hours: Wednesday-Friday: 0800-0900, 1000-1200 & 1300-1500- Call for appointments.

Pool

Location: Area 1, Behind Bowling Center
Phone: 632-5048
Hours: Call Outdoor Recreation for hours.

Shoppette:

Flightline, Bldg. 1407
Phone: 632-6471
Hours: 0600-2100

Traffic Management Office (TMO)

Location: Flightline, Bldg. 1459
Phone: 632-1709
Hours: Monday-Friday: 0800-1630

Youth Programs

Location: Area 1 Bldg. 116
Phone: 632-7575
Hours vary. Please call for direct information.



Mountain View Lodge

Chapel Information



Chapel Office, Bldg. 1467 Flightline

Phone Number: Commercial 0434-30-5211

DSN: 632-5211

Office Hours: Mon-Fri. 0800-1700

Website: <https://www.31fss.com/first-31-pcs-welcome>

Sunday Worship Services:

1000 Catholic Mass, (MBF) Mass Briefing Facility

1000 Church of Christ, Area 1, Education Center, Room 15

1100 Protestant Community Worship, Area 1, Chapel

The Italian Mensa



Open for Lunch
Monday-Friday: 11AM-1:45PM
*Closed on weekends, holidays,
Family Days & Italian Holidays*

\$1 to 1€
Mondays & Friday

Located on the
Flightline
Building 1467

Menu items change weekly.

Featured items include:

Grilled Chicken Thigh w/Lemon Juice

Beef Steak

Pasta w/ Tomato or Meat Sauce

Noodles w/ Salmon and Butter

Grilled Pork Steak

Rice w/ Pumpkin and Rosemary

Baked Lasagna

Grilled Sliced Beef w/ Rucola

Chef Salad

Steamed Vegetables

Potatoes

Mixed cold plates

...and much more!

The Italian
Mensa

Italian Mensa
632-7297 or 0434-30-7297

AWARD WINNING
FORCE
SUPPORT SQUADRON

Mountain View Lodge

On Base Dining Facilities

Hours are subject to change. Visit www.31fss.com or www.shopmyexchange.com for updates.

Aviano Lanes Grill (Area 1, Bldg. 176) Breakfast:

Mon-Fri: 0700-1030

Sat – Sun, Holidays: 0900-1200

Lunch and Dinner:

Sun-Tues, Holidays: 1030-1630

Wed-Thurs: 1030-1830

Fri-Sat: 1030-2130

Mulligan's Grill (Area F, Bldg. 1391)

Breakfast: Mon-Sat: 0630-1000

Sun: 0630-1000, 1100-1330

Italian Mensa (Area F, Bldg. 1467)

Lunch: Mon-Fri: 1100-1345

Closed Weekends, US Holidays, Goal Days, and

La Dolce Vita Dining Facility (Area F, Bldg. 1412)

Breakfast: 0600-0800

Lunch: 1100-1300

Dinner: 1700-1900

Open Daily

Deja Brew Coffee Shops (Area 1, Bldg 176 in Bowling Center & Area F, Bldg. 1431)

Mon-Fri: 0630-1700

Sat-Sun: 0830-1430

Family Days: 0900-1700

Closed US Holidays

Subway (Area 1, Bldg. 179)

Mon-Fri: 0900-1800

Sat-Sun: 1000-1700

Dunkin Donuts (Area F, BX Bldg. 1411)

Mon-Fri: 0700-1800

Sat-Sun: 0900-1600

La Bella Vista Consolidated Club

Lunch: Mon. - Fri: 1100-1300; Closed weekends

Dinner: Tues.- Fri: 1630– 2200.

Holidays and Weekends Hours Vary. Please call for seasonal and up to date hours.

Phone: 6324303

Hunt's Bros Pizza (Area F, inside Shoppette. Bldg. 1407)

Sun-Thurs: 0600-2100

Taco Bell (Area F, BX Bldg. 1411)

Mon-Fri: 1030-1830

Fri-Sat: 0600-2200

Burger King (Area F, BX Bldg. 1411)

Mon-Fri: 0700-2000

Sat: 0800-2000

Sun: 0830–1800

Popeye's (Area F, BX Bldg. 1411)

Mon-Sat: 1100-2000

Sun: 1100-1800

La Torre Italian Corner: (Area F, BX Bldg. 1411)

Mon-Fri: 0700-1900

Sat: 0900-1500

Closed Sundays and US Holidays

Bun-D:

Mon-Sat: 1000-2000

Sun: 1000-1800



Mountain View Lodge

Off Base Dining Facilities:

Aviano Inn

Via Sacile 24,
0434651050

Befed Brew Pub

Viale per Costa 6/B
0434-661025

Bobé's The Getaway

Via Pordenone 48
0434-678094

The Gammon

Via Pionieri Dell' Aria 104
3337939349

La Locanda

Via Pordenone 10
0434-677170

San Giorgio's (Spaghetti House)

Via. S. Giorgio, 34
0434-651482

New Risto Pizza by Mario

Via Lungo 2
0434-661591

Samurai Sushi

Via Pionieri Dell' Aria 86
331-2755555

Taco Mania

Via Pionieri Dell' Aria 133A
331-8608545

Western House

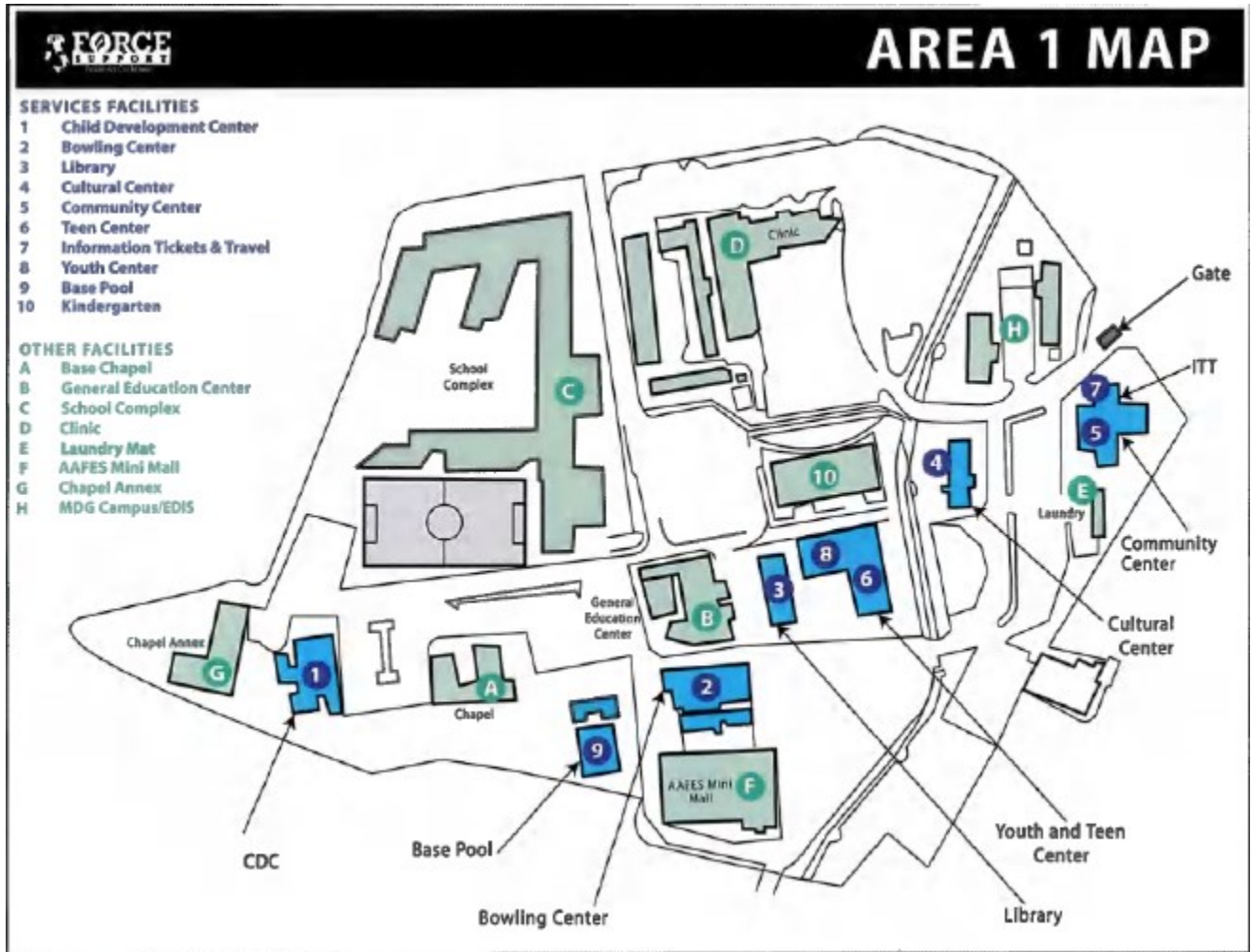
Via Riccardo Pitteri, 1B
0434-651851

Please call the restaurant directly for reservations and hours.

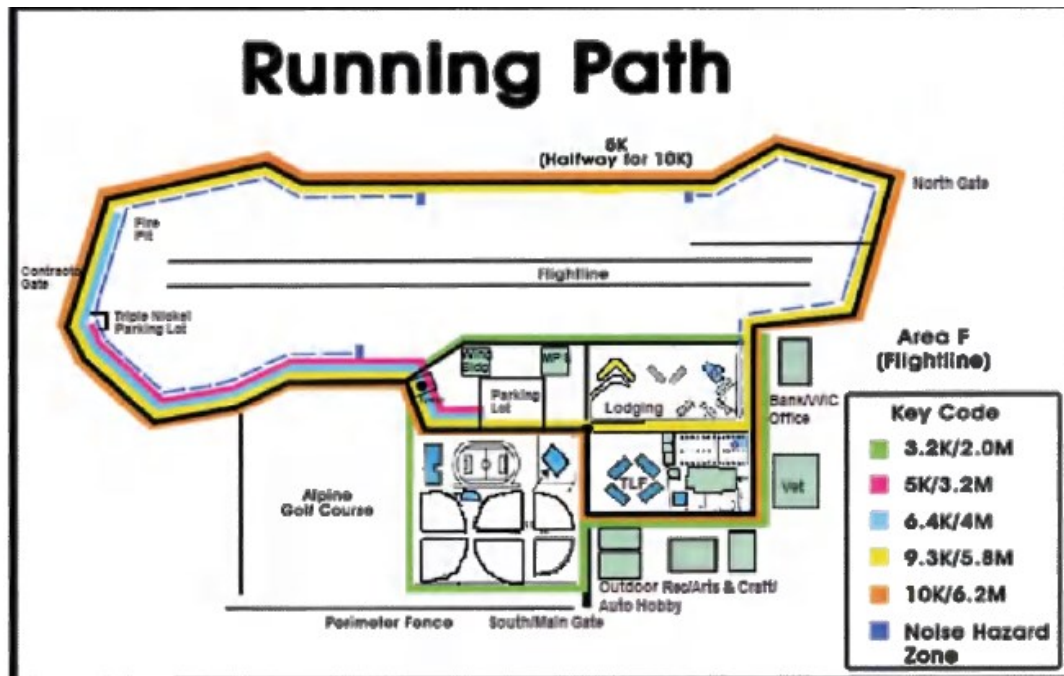
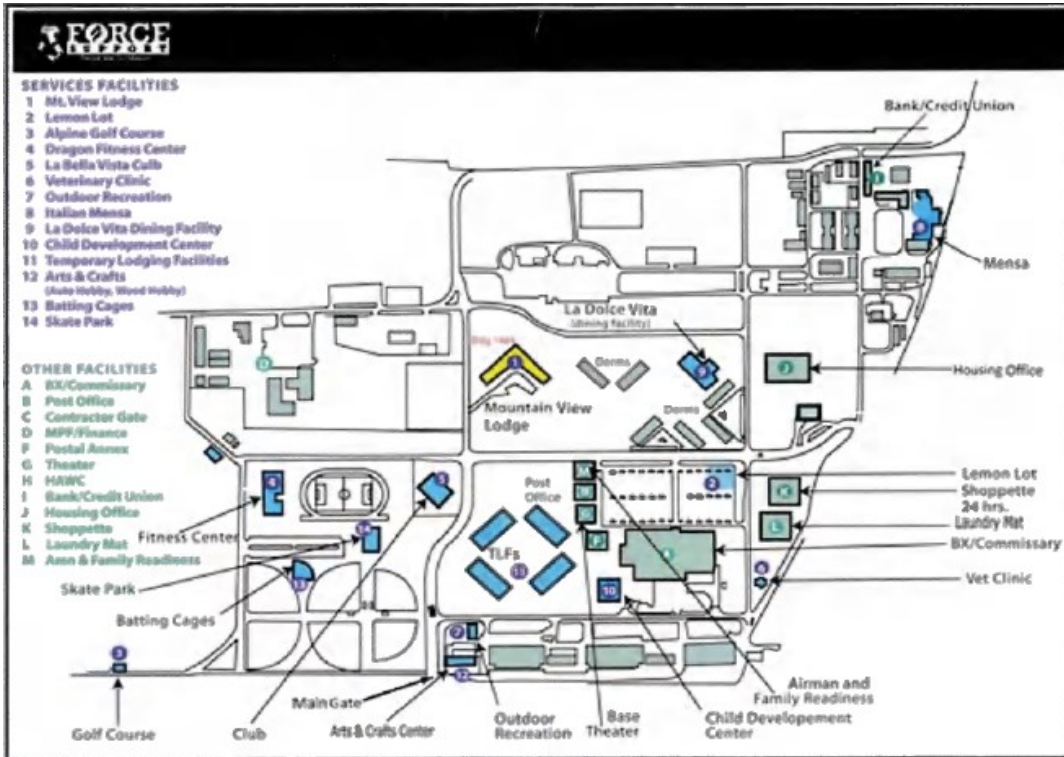
Commercial calls from your room phone are charged directly to your bill



Mountain View Lodge

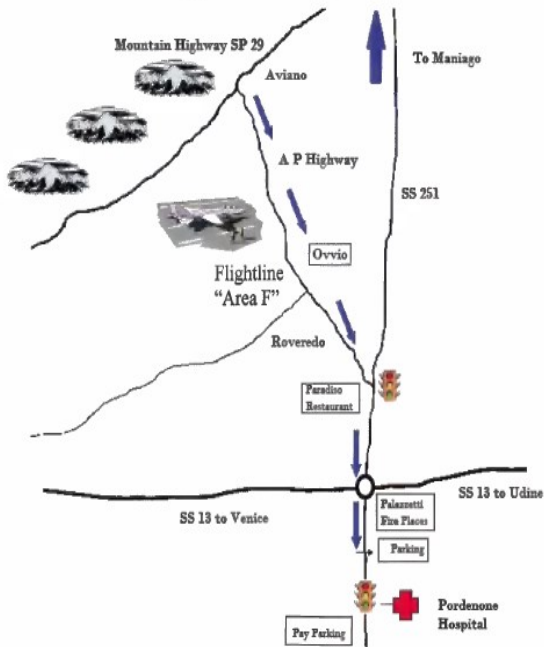


Mountain View Lodge



Mountain View Lodge

To the Pordenone Hospital from Aviano



To the Pordenone Hospital from Aviano:

Via Montereale 24, Pordenone, PN 33170

- ◆ From Flightline Area F South Gate 9, exit Aviano AB and take the first exit at the roundabout – OR- from Area 1/Aviano AB head towards Pordenone on SP7 (aka AP Highway)- continue 5.2 km from South Gate.
- ◆ Turn right onto Via Montereale SR 251 continue 1.6 km.
- ◆ You will see the Palazzetti Fireplace store on your left, keep straight through this roundabout.
- ◆ Shortly after this intersection you will see a large parking lot on your left.
- ◆ Unless there is an emergency, park here and follow this road on foot.
- ◆ The hospital main entrance and ER are by the next traffic light.

To the Aviano Air Base Hospital and Dental Clinic from Flightline Area F

- ◆ The Aviano AB hospital is located on Area 1 in Aviano. The Dental Clinic is located within the hospital. *The hospital does not provide emergency services or after hours care.*
- ◆ Directions to Area 1 are found on the Aviano Map at the Front Desk.

Off Base Dental Care

Dr. Paolo Pirrachio, Dental Surgery and Orthodontics

Via XX Settembre 1/A, Roveredo in Piano, PN 33080

0434-961-1072

Dr. Pirracchio speaks English and accepts the Tricare Dental Plan

- ◆ From Flightline Area F South Gate 9, exit Aviano AB, taking the first roundabout exit, heading towards Roveredo. Follow this for approximately 1 km.
- ◆ Turn right onto Via G. Mazzini and continue straight for 870 meters. The office is located in the courtyard behind the Credit Agricole Friuladria Bank.



Mountain View Lodge

Aviano Area Map:

HOTELS

Hotels: HOTEL OLIVA

Via Luigi Longo 2, Aviano

RESIDENCE MAGNOLIA

Via Dante 9C, Aviano

RESIDENCE ELITE

Via A. Pitteri 1/A, Aviano

PALACE HOTEL

Via Sacile 21A, Aviano

VILLA POLICRETI

Via IV Novembre 13, Aviano

RESTAURANTS

NEW RISTO PIZZA

Via Luigi Longo 2, Aviano

BEFED'S BREW PUB

Viale Per Costa 6B, Aviano

SAN GIORGIO "SPAGHETTI HOUSE"

Via S. Giorgio 34, Aviano

CASA BIANCA

Via S. Giorgio 19, Aviano

WESTERN HOUSE

Via Riccardo Pitteri 1B, Aviano

AVIANO INN

Via Sacile 24, Aviano

YU FEN CHINESE

Via ROMA 49, Aviano

PIZZA D'ITALIA

Via Gramsci 12, Aviano

DORTH PROSCIUTTERIA

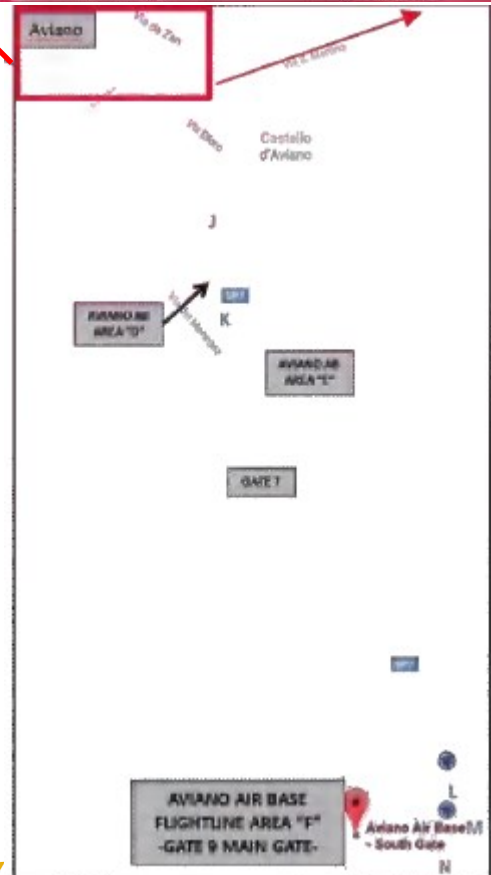
Via Pordenone 4, Aviano

DRAGO CHINESE

Via Pordenone 81, Aviano

BOBE'S THE GETAWAY

Via Pordenone 48, Aviano



ALPINE GOLF COURSE

MOUNTAIN VIEW LODGE SPECIAL

SEE BELOW UN HOW YOU CAN RENT A GOLF STANDARD SET FOR FREE!

MULLIGAN'S GRILL IS THE ONLY RESTAURANT ON THE FLIGHTLINE THAT OFFERS BREAKFAST MADE TO ORDER **7 DAYS A WEEK!**



We know it's difficult to haul the clubs when you PCS or TDY. Alpine Golf Course wants to make it easy to get your golf fix. Receive FREE Golf Club Rental Standard Set with the purchase of a green fee when you show your room key from the Mountain View Lodge.

Mulligan's Grill located at the Alpine golf course is open daily for breakfast and lunch. Breakfast hours are 0630 - 1000 and lunch 1100-1330. Alpine Golf Course is located less than a 5 minute walk from the Mountain View Lodge across from Freedom Park and the Dragon Fitness Center.

FLIGHTLINE MAP



Alpine Golf Course
632-7386 or 0434-30-7386



Mountain View Lodge

Local Points of Interest

Name	Location	Distance From Base	Description
Gorgazzo	Range, Polcenigo	15 Minutes	Mountain Spring
Piancavallo Resort and Park	Piancavallo	30 Minutes	Ski resort, park, and activities
Knife Factories	Maniago (Town Center)	20 Minutes	Handmade Knives
Mosaic Medieval	Spilimbergo	30 Minutes	Antique City, celebrated for mosaic artwork
Lake Barcis	Montereale	25 Minutes	Beautiful lake surrounded by mountains
Pordenone	Pordenone (Town Center)	15 Minutes	Shopping, Noncello River views, & Noble Palazzos
Garden of Venice	Sacile	15 Minutes	Antique bridge, Livenza River views, & shopping



An important part of Italian culture is the "mercato" or the open air market. Each city and town has their own, unique market day. At most markets you will find fresh flowers, fruits, vegetables, cheese, and meats. You will also find interesting trinkets, cloth and clothing, as well as housewares. The markets typically run from 0800 to 1230. You may want to visit one of the following:

Monday	Tuesday	Wednesday	Thursday	Friday	Saturday
Maniago	Aviano	Pordenone & Budoia	Sacile & Roveredo	Cordenons & Porcia	Pordenone, Spilimbergo, & Polcenigo

Mountain View Lodge

Transportation Information

On-Base Shuttle: Service is available connecting Area F and Area 1 with outlying sections of the base. A current schedule is provided at the front desk. The closest stop to all lodging facilities is across the street from the Airman and Family Readiness Center.

Bus to Marco Polo Airport: A commercial bus service to and from Marco Polo Airport in Venice connects at the main bus/train stations in Pordenone. An updated bus schedule can be found at the front desk. Both sites have an English option in the right-hand corner in the shape of the British flag.

Bus: 0421-5944 or www.atvo.it

Flight information: 0412-609260 or www.veniceairport.it

Patriot Shuttle: 31FSS Information Tickets and Travel (ITT) provides a shuttle to/from Marco Polo and Treviso Airports available for hire. The shuttle must be reserved at least 3 days in advance. Prices start at \$60. Kenneled pets are allowed on the shuttle. Contact ITT for reservations or go to their office, located inside the BX Shopping Mall on Area F.

Phone: DSN: 632-3107 or Commercial: 0434-30-3107

Email: itt@aviano.af.mil

Website: <https://patriotshuttle.com>

Local Bus Services: There is a regular local bus service from Aviano (Main Square) to Pordenone, Dardago, Montereale, Polcenigo, and Sacile. In the winter a bus leaves every morning to Piancavallo, the nearby ski resort. The bus schedule is posted in the main square. Tickets are not sold on the bus, so you must purchase them beforehand. Tickets are sold at the magazine stand in the square and most "Tabacchi" shops.

Train: The Pordenone train station is located in the city center of Pordenone. You may take the train to Venice or connecting to many other major cities. You can access the train schedules online at www.trenitalia.it. The button for English is located at the top of the page.

Rental Car Companies

Closed Sundays

<u>Company</u>	<u>Address</u>	<u>Phone Number</u>
Economy Rent Via	Pedemonte 3/A, Aviano	0434-661155
Avis	Via Mazzini 58, Pordenone	0434-21925



Mountain View Lodge



DEPARTMENT OF THE AIR FORCE 31ST FIGHTER WING (USAF)

2 November 2016

MEMORANDUM FOR ALL 31ST FIGHTER WING

FROM: 31 FW/CC

SUBJECT: Aviano AB Heating and Air Conditioning Policy

1. This memorandum implements USAFEI 32-7040, *Air Conditioning (AC) Utilization Procedures and Guidance*, and provides specific wing policy regarding heating and comfort AC systems. Each of us must do our part to reduce energy and greenhouse gases through improved energy efficiencies in order to meet mandated federal energy reduction goals and future fiscal limitations. These guidelines will help us balance energy reduction while sustaining mission requirements and quality of life for all Team Aviano members.

2. Responsibilities:

a. **Building Occupants:** Saving energy starts with you. Maintain temperatures as shown below. If you have a manually adjustable heating or AC control in your office space, set it to be within these limits. Use air conditioning only during occupied hours and don't forget to turn down the heat/AC or use the economizer setting (if available) before you depart for the day.

Type of Space	Heating Set-Points		Cooling Set-Points	
	Occupied Hours	Unoccupied Hours	Occupied Hours	Unoccupied Hours
Administrative	20°C / 68°F	12.7°C / 55°F	25.6°C / 78°F	29.4°C / 85°F
Customer Service area	20°C / 68°F	12.7°C / 55°F	25.6°C / 78°F	29.4°C / 85°F
Hallway/Vestibule	18.3°C / 65°F	12.7°C / 55°F	25.6°C / 78°F	29.4°C / 85°F
Maintenance shop	18.3°C / 65°F	12.7°C / 55°F	Unconditioned	Unconditioned
Stairwell	12.7°C / 55°F	12.7°C / 55°F	Unconditioned	Unconditioned
Storage	12.7°C / 55°F	12.7°C / 55°F	Unconditioned	Unconditioned
Shower/Locker room	23.8°C / 75°F	12.7°C / 55°F	Unconditioned	Unconditioned

b. **Facility Managers:** Ensure the office spaces in your building are within the temperature set-points shown above. Notify CES Customer Service at 632-5636 if your spaces are more than 3°F higher or lower than these temperature set-points for more than 3 work days or if the heat/AC system is not operating. Work with CES to efficiently heat/cool your building if there are programmable thermostats or if the controls are centrally managed. Also notify CES of any changes in facility occupied hours. Look for new energy-saving practices and submit AF Form 332, *BCE Work Order Request*, to 31 CES for implementation consideration.

c. **31 CES:** The spring and fall seasons with their milder temperatures are an ideal time to save energy. Ensure automated control systems are set to the temperatures above. Use the following chart to activate and deactivate heating and comfort AC systems. Excluding mission

Mountain View Lodge



DEPARTMENT OF THE AIR FORCE 31ST FIGHTER WING (USAFE)

12 July 2020

MEMORANDUM FOR LODGING GUESTS

FROM: Mountain View Lodge Management Team

SUBJECT: Air Conditioning in Lodging

Thank you all for your cooperation during this trying time.

I am aware that each year, there are multiple complaints regarding the temperatures in Lodging. I personally went to speak with CE in regards to this issue and I learned that Lodging Visiting Quarters and TLFs have Italian air conditioning systems that are set at certain temperature points. The Italian ACs do not work the same as American systems where the temperature can be set well below the outside temps regardless of that temperature. The AC systems in lodging MAX out their coolness at 78 degrees which is well below the outside temperatures of 86 plus.

To ensure your room is cool and comfortable, we ask that you do the following:

1. Open your windows at night when the temperatures are cool and the air is breezy. Make sure you use your screens to keep bugs out!
2. Use your fans at all times. At night the use of the fans will draw the cool air in and keep it circulating during the day.
3. Close your curtains during the day to keep the sun/heat out and keep your fan on.

Accomplishing these 3 small items will greatly improve your comfort while staying with us!!

If you have any further questions please contact the Front Desk by dialing zero from your room, or DSN 632-4040, Comm. 0434-30-4040 ext. 0.

A handwritten signature in black ink, appearing to read "BW", is located in the bottom right corner of the page.

Ms. Barbara Wills, NF-IV, DAF
Lodging Manager

Mountain View Lodge

Italian Law for Child Supervision Aviano AB, Italy

The ages specified are the maximum ages and are based on the child's ability to demonstrate age-appropriate behavior. Children who do not consistently demonstrate age-appropriate behavior should not be given the same degree of self-management responsibilities. Parents are also responsible for considering any physical or mental limitations a child may have when considering how much supervision is necessary. In all instances below where a "yes" is indicated, the parent is responsible for using reasonable judgment and for any incident or mishap (considered preventable) which occurs. If **you have any questions or concerns, please contact Family Advocacy at DSN 632-5667 or commercial 0434-30-5667.**

NOTE: Italian law prohibits "abandonment" of any person under 14 years of age or who by reason of mental or physical illness is incapable of caring for him/herself. "Abandonment" is not defined. Parents are therefore cautioned to consider all relevant factors and apply the standards in the first paragraph above.

Age of Child	Left Without Sitter	Left Alone Overnight	Outside Unattended (Including Playgrounds)	Left in Car Unattended	Youth Sitting for Siblings	Youth Sits for Others
Newborn to Age 4	No	No	No	No	No	No
Age 5-10	No	No	Yes, playground or yard with immediate access (visual sight or hearing distance) to direct adult supervision ***	No	No	No
Ages 11-13	No	No	Yes, with immediate access (visual sight or hearing distance) to adult supervision ***	Yes, keys removed, with immediate access (visual sight or hearing distance) to adult supervision***	No	No
Ages 14-15	Yes, with access to adult supervision*	No	Yes	Yes, with keys removed	Yes	Yes
Ages 16-17	Yes	Yes	Yes	Yes, with keys removed	Yes, including overnight"/**	Yes including overnight*/**

*Youth who are left without sitter or who baby-sit must have access to adult supervision, telephone, live near-by, etc.

**Red Cross baby-sitting training or equivalent is recommended.

***Adult supervision is defined as someone who has or assumes direct responsibility for the child, i.e. parent, friend, care provider.